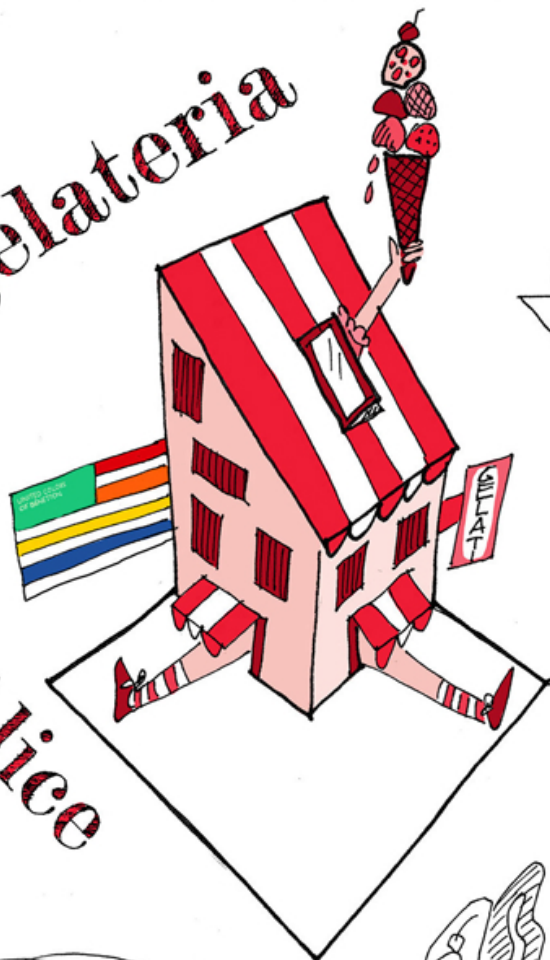


la gelateria

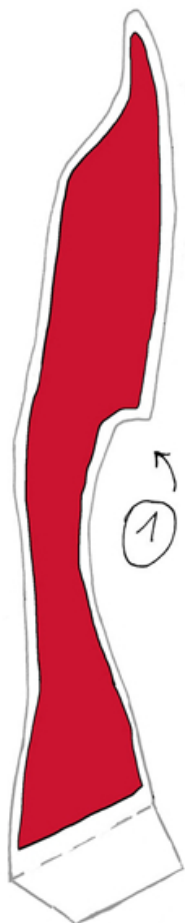
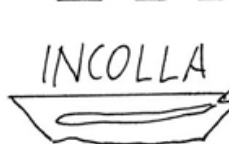
di Alice



TAGLIA

PIEGA

INCOLLA



LA GELATERIA DI COLOROPOLI FA UN GELATO CHE E' UNA MERAVIGLIA!

LE SUE SPECIALITA' SONO:

- IL CIOCCOLATO ROSSO
- IL PISTACCHIO VERMIGLIO
- LA CREMA BORDEAUX
- IL CREMINO CREMISI
- L'ANANAS SCARLATTO

(FAMOSO ANCHE IL SUO CREMOSO ALLA CILIEGIA BLU, MA FINISCE SUBITO)

UN PROGETTO DI

UNITED COLORS OF BENETTON.

IN COLLABORAZIONE CON

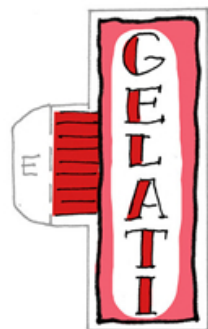
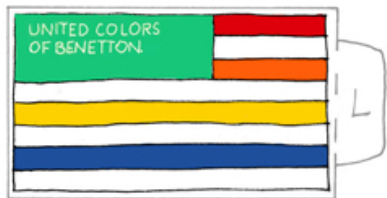
MUBA
MUSEO DEI BAMBINI MILANO

A CURA DI

ISADORA BUCCIARELLI

RITAGLIA I PEZZI ① E ② E DOPPIALI, INCOLLANDOLI FINO ALLA PIEGA.

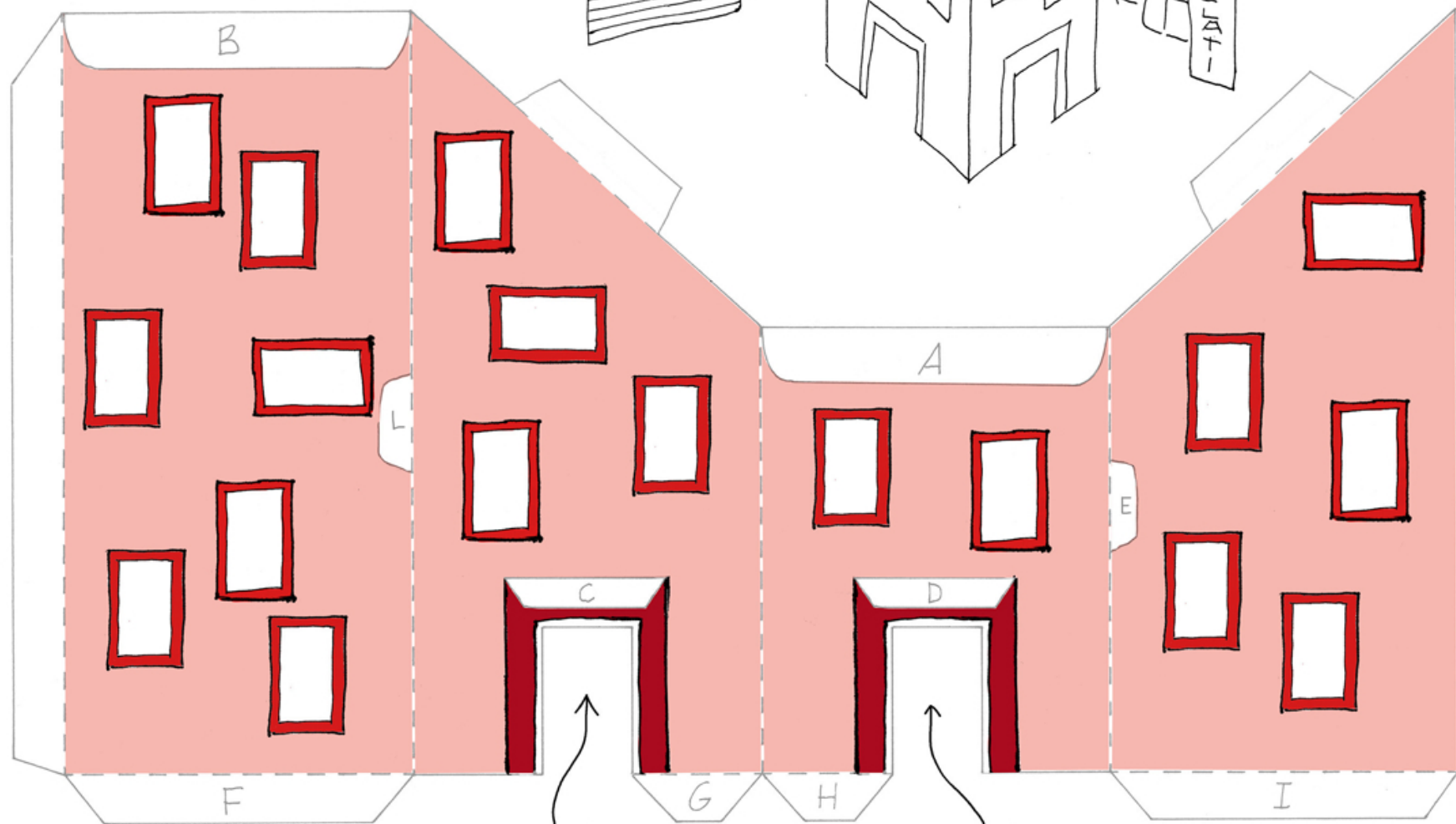
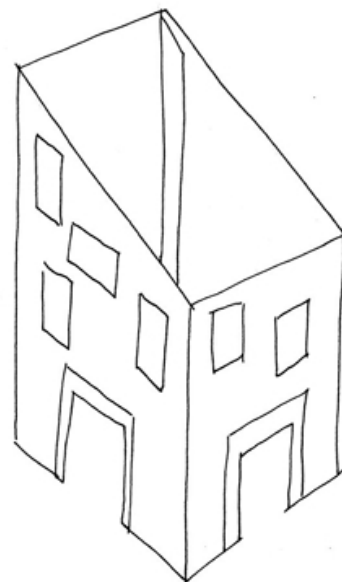
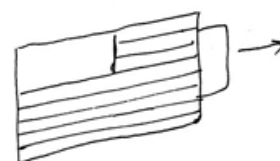




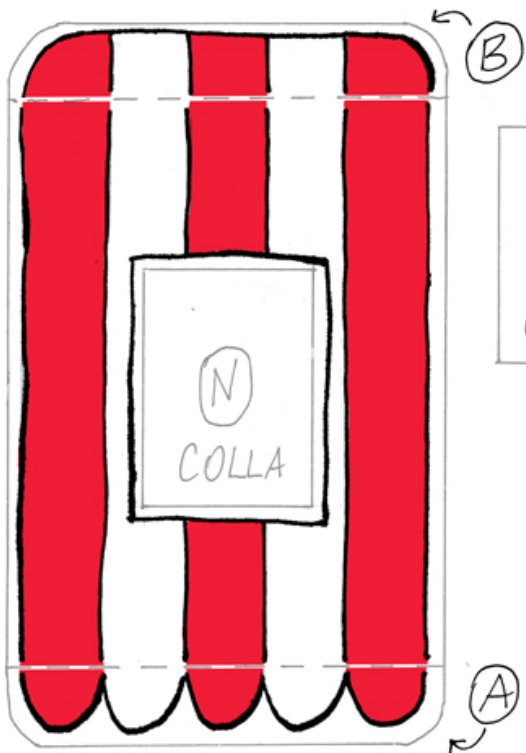
INCOLLA TUTTI
I PEZZI E RIPIEGA
VERSO L'INTERNO
LE LINGUETTE
Ⓕ Ⓖ Ⓗ Ⓘ



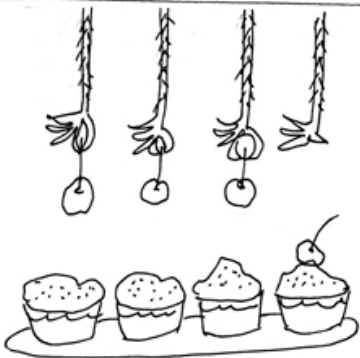
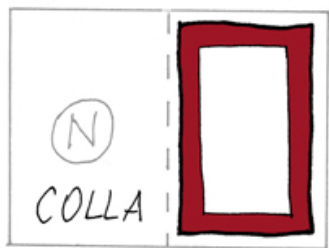
RITAGLIA LA
GELATERIA
E LE DUE
INSEGNE



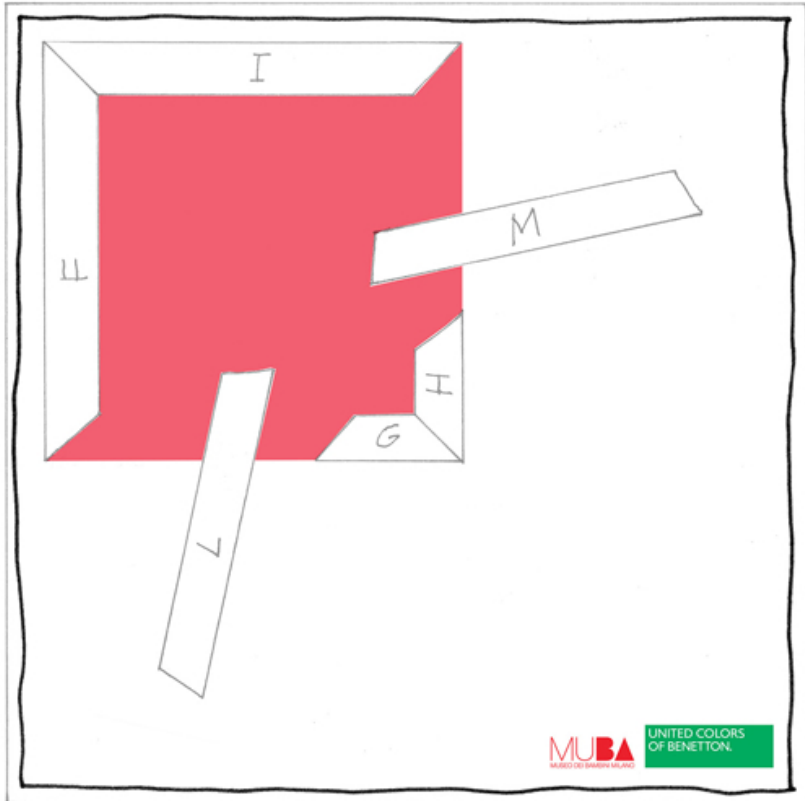
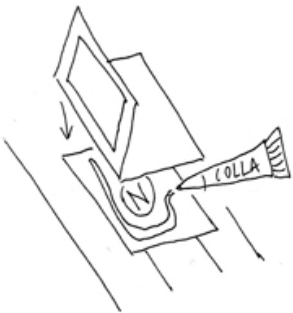
RITAGLIA ANCHE LE PORTE



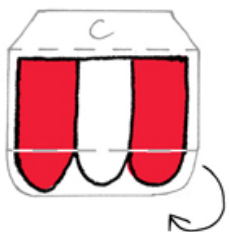
FINESTRA



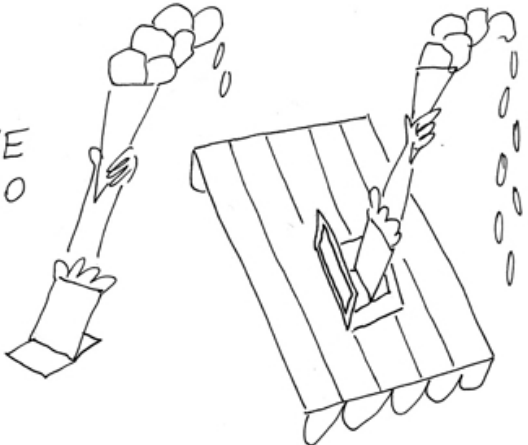
INCOLLA LA
FINESTRA
SUL TETTO
(SOLO LA PARTE
CON LA (N)!))



MUBA UNITED COLORS OF BENETTON



PIEGA
LE ALETTE
DEL BRACCIO
E INCOLLALE
DENTRO
LA FINESTRA



INFINE
INCOLLA LE
GAMBE DELLA
GELATAIA
GIGANTE
SULLA BASE!

